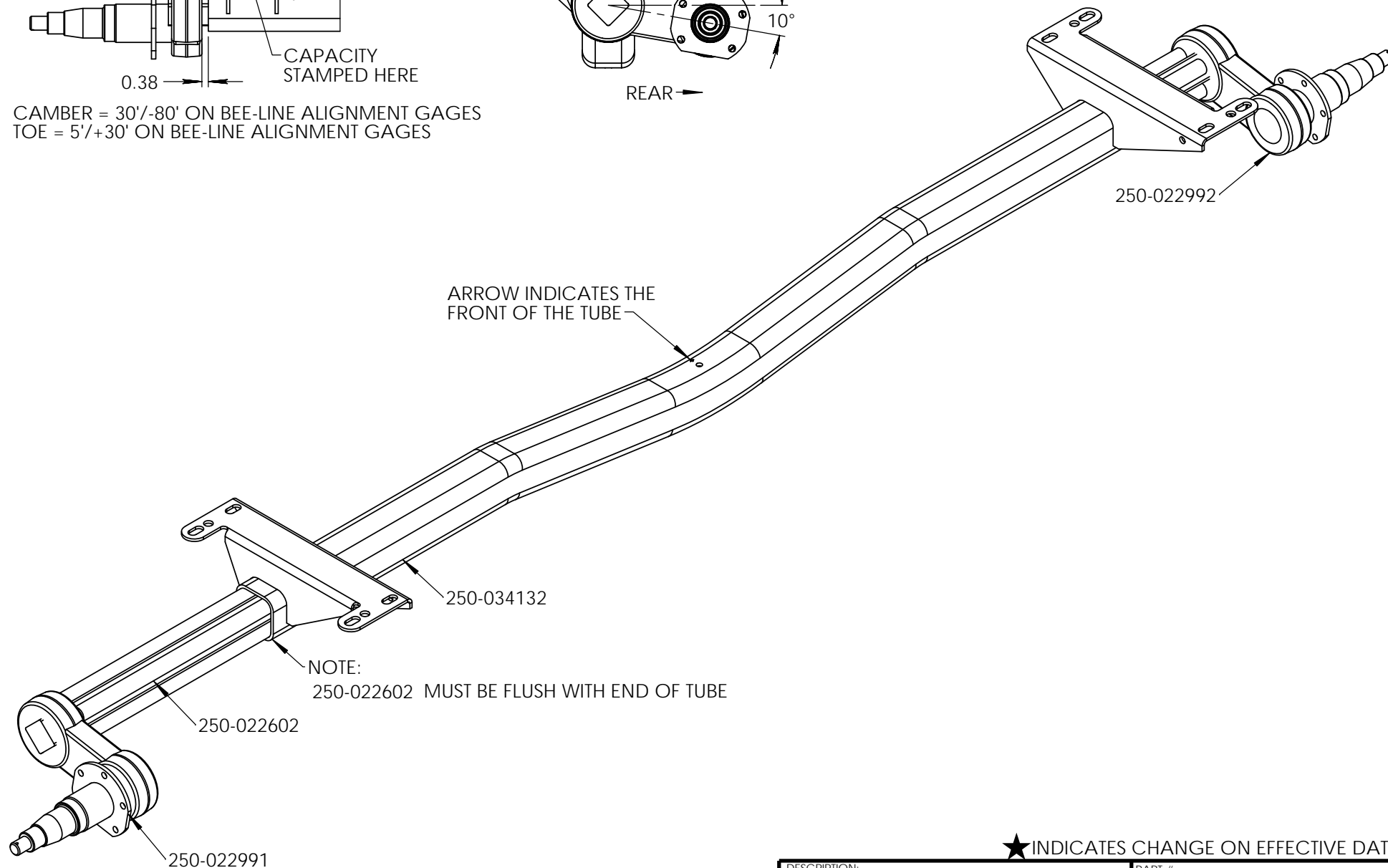


CAMBER = 30'/-80' ON BEE-LINE ALIGNMENT GAGES
TOE = 5'/+30' ON BEE-LINE ALIGNMENT GAGES

ARROW INDICATES THE FRONT OF THE TUBE



★ INDICATES CHANGE ON EFFECTIVE DATE

DESCRIPTION:
AXLE W/SPNDL 5500# TRSN
70.25"FC 88"HF

PART #:
300-034135



EFFECTIVE DATE:
04-13-15

ECN:
897